

KARIBAN

K561

Fisherman's smock

- Enzyme-washed fabric, excellent printability.
- Cotton canvas for a durable and hard-wearing fabric.
- Sailing Collection.

100% cotton canvas. Enzyme-washed. Large inside pocket. Side slits. Front opening fastened with 1 button. This product has been specially treated and appears intentionally aged. This manufacturing process results in colour variations between products and makes each piece unique.



XXS XS S M L XL XXL 3XL



310 g/m²

Certifications



STANDARD
100
CQ 1007/7
IFTH
www.oeko-tex.com



CONFIDENCE
TEXTILE

More information

Logistic



1



10



Country of origin

IN - India
BD - Bangladesh

Customs code



62052000



Navy

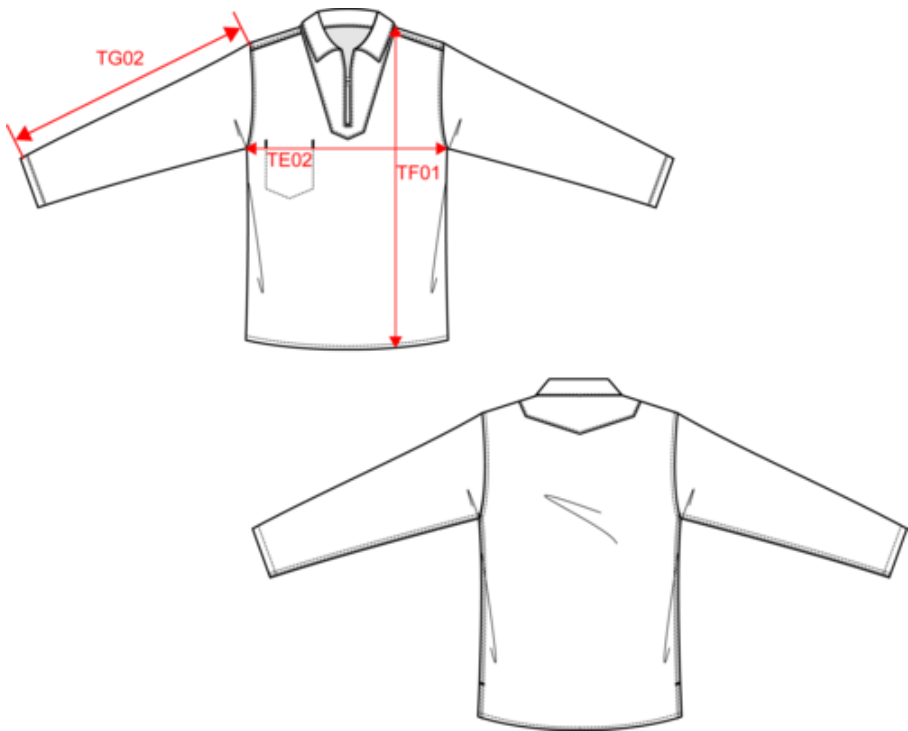


KARIBAN

K561

Fisherman's smock

Dimensions (cm)



Measurements in cm	XXS	XS	S	M	L	XL	XXL	3XL
TE02 - 1/2 chest width at armhole bottom line	49.00	52.00	55.00	58.00	61.00	64.00	67.00	70.00
TF01 - Total height from HSP	70.50	72.50	74.50	76.50	78.50	80.50	82.50	84.50
TG02 - Long sleeve length	60.50	61.50	62.50	63.50	64.50	65.50	66.50	67.50

KARIBAN

K561
Fisherman's smock

Colours information



Navy
RVB : 41,46,56
Pantone C : 433C
Pantone TCX : 19-4012TCX

Logistic  1  10

Sizes	Width (cm)	Height (cm)	Length (cm)	Net weight (kg)	Gross weight (kg)	Pieces/Box	Pieces/Bundle
XXS	40.00000	18.00000	60.00000	4.30000	5.80000	10	1
XS	40.00000	18.00000	60.00000	6.10000	7.35000	10	1
S	40.00000	18.00000	60.00000	6.40000	7.65000	10	1
M	40.00000	18.00000	60.00000	6.65000	7.90000	10	1
L	40.00000	18.00000	60.00000	6.95000	8.20000	10	1
XL	40.00000	18.00000	60.00000	4.30000	5.80000	10	1
XXL	40.00000	18.00000	60.00000	4.30000	5.80000	10	1
3XL	40.00000	18.00000	60.00000	4.30000	5.80000	10	1