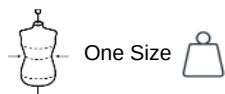


KI3001

Trekking pole

- Super lightweight aluminium.
- Collapsible and folds in three for easy transport.
- Anti-shock system for greater comfort and better stability.

Trekking pole in extra-light 6061 aluminium. 3 sections with detachable rubber tip. Easy-carry. Adjustable length. Anti-shock system for better grip, and enhanced stability and comfort. Sold individually. Minimum size : 65 cm. Maximum size : 135 cm.



Certifications

More information

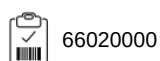
Logistic



Country of origin



Customs code



Black





KI3001

Trekking pole

Dimensions (cm)



KI3001

Trekking pole

Colours information



Black
RVB : 35,35,37
Pantone C : Black
Pantone TCX : 19-4004TCX

Logistic



40

Sizes	Width (cm)	Height (cm)	Length (cm)	Net weight (kg)	Gross weight (kg)	Pieces/Box	Pieces/Bundle
One Size	31.00000	22.00000	70.00000	11.50000	12.50000	40	0